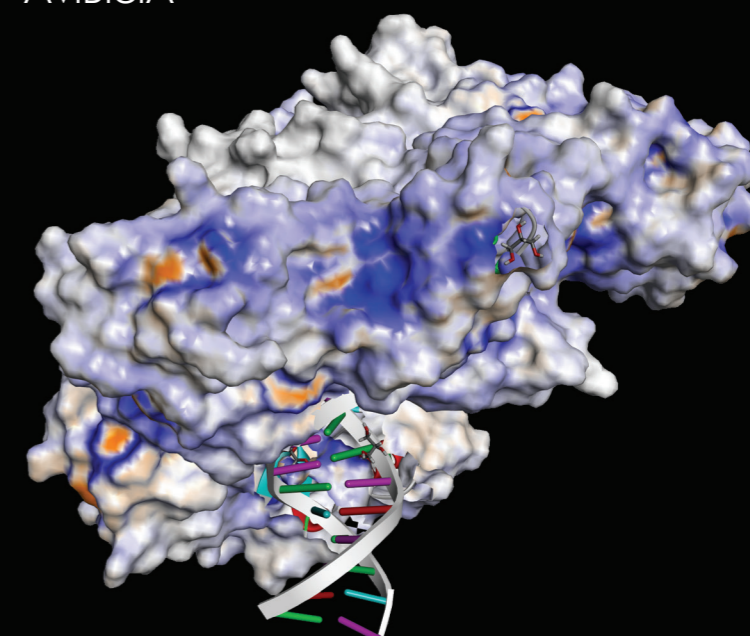


PROTEIN ASSAY

- AviLMW™
- AviChem™
- AviBiciA™





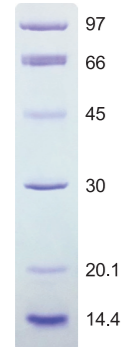
avigene

AviLMW™

Low Molecular Weight Protein Marker

AviLMW™ for SDS electrophoresis is a ready-to-use liquid mixture of six purified proteins. It is designed for use as a molecular weight standard in SDS-polyacrylamide gel electrophoresis. The proteins in AviLMW™ range from 14.4 KDa to 97 KDa when used in denaturing polyacrylamide gels.

Mw (kDa) 12.5%



avigene

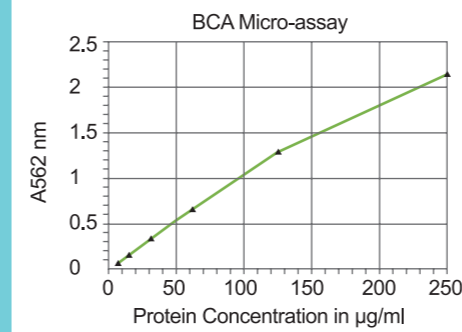
AviBiciA™

Bicinchoninic Acid Protein Quantification Kit

AviBiciA™ utilizes the reduction of a copper (Cu²⁺) salt to its cuprous state (Cu⁺) by proteins in solution. This colorimetric assay is suitable for measuring protein concentrations ranging from 5 to 1000 µg/ml.

Advantages:

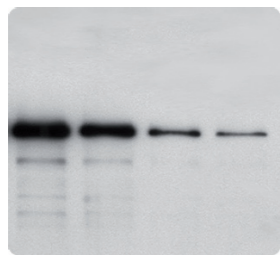
- Less protein-to-protein variation
- Less affected by ionic and nonionic detergents
- Detection down to 5 µg/ml of protein with concentration as low as



AviChem™

Chemiluminescence Substrate

AviChem™ is a two-component (Solution A and Solution B) system recommended for horseradish peroxidase (HRP)-based Western blotting procedures. The chemiluminescent signal can be quantitatively detected using autoradiography film, CCD cameras, or chemiluminescence readers.



- Advantages:**
- Suitable for Western blotting and dot blot applications.
 - Offers higher sensitivity than traditional chromogenic substrates like DAB and Alpha-naphthol.

